



TPOLOGY, CONSTRUCTION AND SOCIAL RELEVANCE

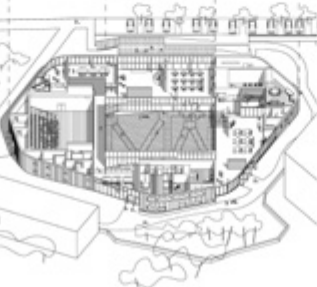
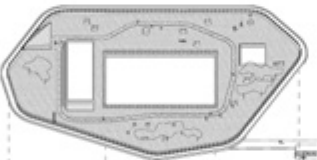
LETTER FROM CHINA, Li Xiangning

OPEN Architecture

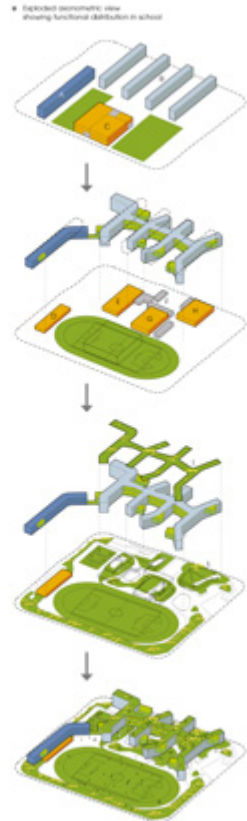




Ground floor plan - Not to scale

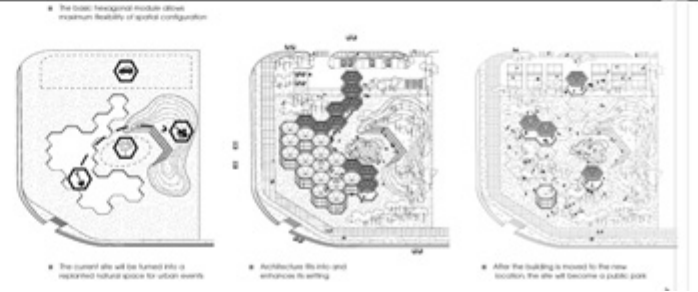
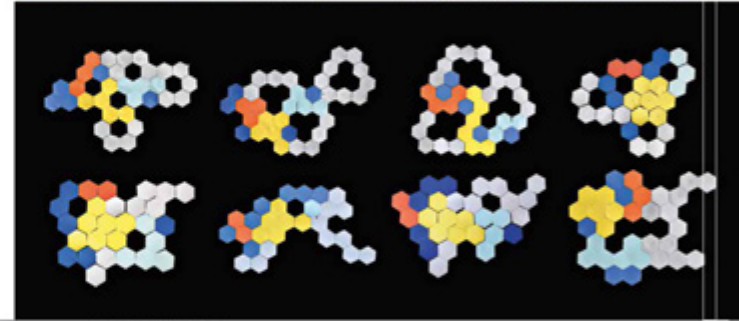
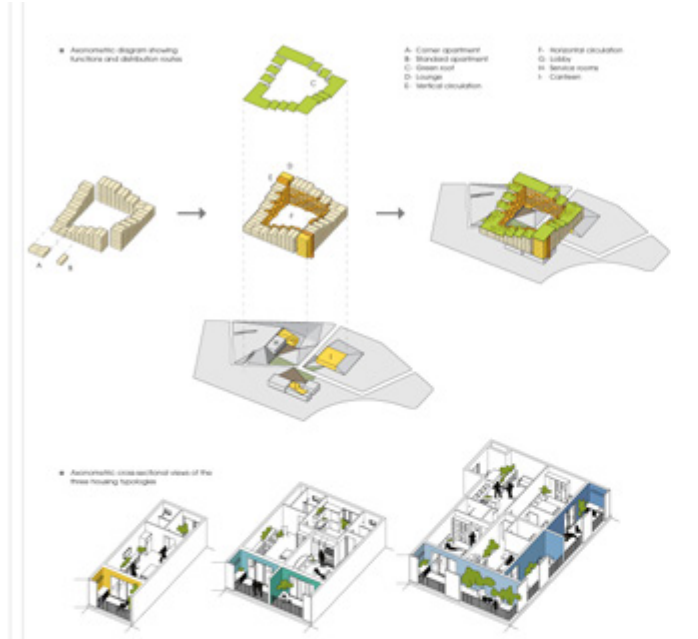


Exploded axonometric view of the program

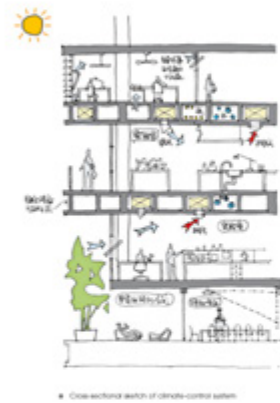


- A. Dormitory
- B. Teaching spaces
- C. Public space
- D. Swimming pool
- E. Cafeteria
- F. Service areas
- G. Gym
- H. Auditorium
- I. Roof - Organic form
- J. Garden





OCEAN CENTER
CAMPUS
TSINGHUA UNIVERSITY
SHENZHEN, CHINA



• Core section with lift of canopy control system



• Axonometric sections



• 1st floor



• 2nd floor



• 3rd floor

- A. Lobby
- B. Exhibition room
- C. Cafe
- D. Multi-media room
- E. Workshop
- F. Study (Open Office)
- G. Panoramic study area
- H. Panoramic office
- I. Restrooming area